



RV



SAFE

SIMPLE

SECURE

ABOUT OUR COMPANY

SmartPlug Systems is a privately held manufacturing firm specializing in power delivery systems. It was founded in 2007 and is located in Seattle, WA. Its flagship product, the SmartPlug, is a patented device positioned to replace the current power delivery system for Boats, RV's and a variety of specialty vehicles and miscellaneous industrial applications.

SmartPlug Systems
2500 Westlake Avenue North, Suite G
Seattle, WA 98109-2262
Phone - (206) 285-2990
Fax - (206) 285-2981
info@smartplug.com
www.SmartPlug.com



OUR COMMITMENT TO OUR CUSTOMERS

SAFE

- Reduces Overheating
- Reduced Fire Risk
- Increases Peace of Mind

SIMPLE

- Self-Aligning
- One Handed Operation
- Fail Safe



Proudly made
in the USA

SECURE

- Four Locking Features
- Strong, Stable Connection
- Cover Engages Plug

OUR VISION

To improve industry safety and performance standards for recreational and commercial marine power delivery systems.

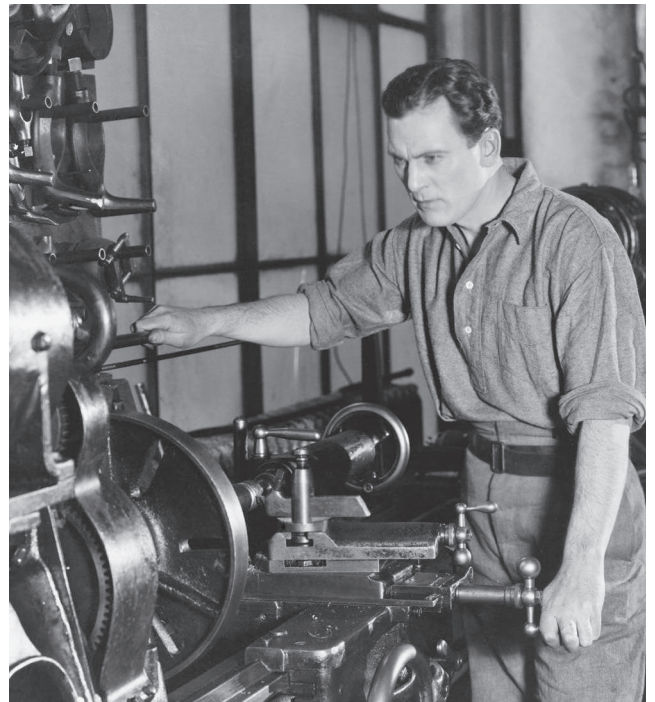
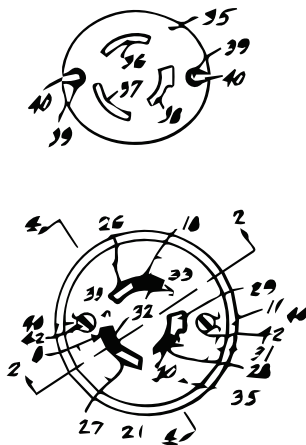
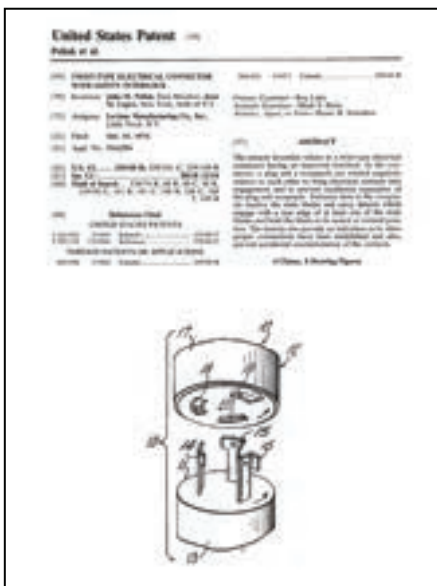
CATALOG CONTENTS

- 2 About Our Company
- 4 - 5 Old Technology
- 6 Why SmartPlug
- 7 Connector Installation
- 8 - 9 Cordset Features & Reverse Polarity
- 10 - 11 Cordsets
 - 12 US - 30 Amp
 - 13 US - 50 Amp
- 14 -15 EURO - 16 Amp
- 16 - 17 EURO - 32 Amp
- 18 - 19 Data Ports & Accessories
- 20 Service Kits
- 21 Receptacle Adapters
- 22 Durable & Weather Resistant
- 23 Testimonials

Contrary to popular belief, the #1 cause of shore power failure and fires is not electrical shorting, but rather overheating caused by poor electrical conductivity.

DID YOU KNOW?

Shore power delivery systems have remained virtually unchanged since they first came out in 1938.



THE PROBLEM WITH THE ORIGINAL SYSTEM

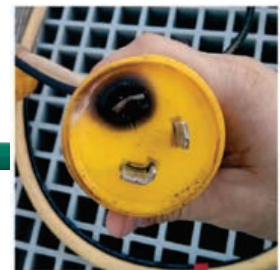
The shape of electrical pins allows for very little contact area, and the pins themselves are also largely responsible for bearing any physical stress placed on the cord (from constant movement of the boat, someone tripping on the cord, etc.) This results in the pins working loose, further lessening the precious little contact area they had to begin with. Furthermore, such loose connections allow for moisture intrusion and ultimately corrosion of the pins. Arcing occurs and the connection heats up, scorches, and in some cases, catches fire. Because the current draw is unchanged, all of this happens long before a breaker or a GFCI can cut the power. Additionally, the old design can be very difficult to use in low light or hard-to-reach scenarios since the "L" shaped pin must first be located and then oriented before connection.

THE PROBLEM

NOT ENOUGH METAL TO METAL CONTACT AREA



TWIST-TYPE PRODUCTS DESIGN FLAWS



- Curved Electrical Pin & Clips / Difficult to Align / Limited Contact Area
Pin contact affected by cord weight & movement / Reduces contact area / Creates heat.
- Visible Gap Between Body of Plug & Inlet Housing
Allows moisture intrusion which creates corrosion, arcing & heat buildup.
- Not Weather Proof - Legacy Design Does Not Include Gasket Systems
Results in corrosion which is a major cause of overheating.

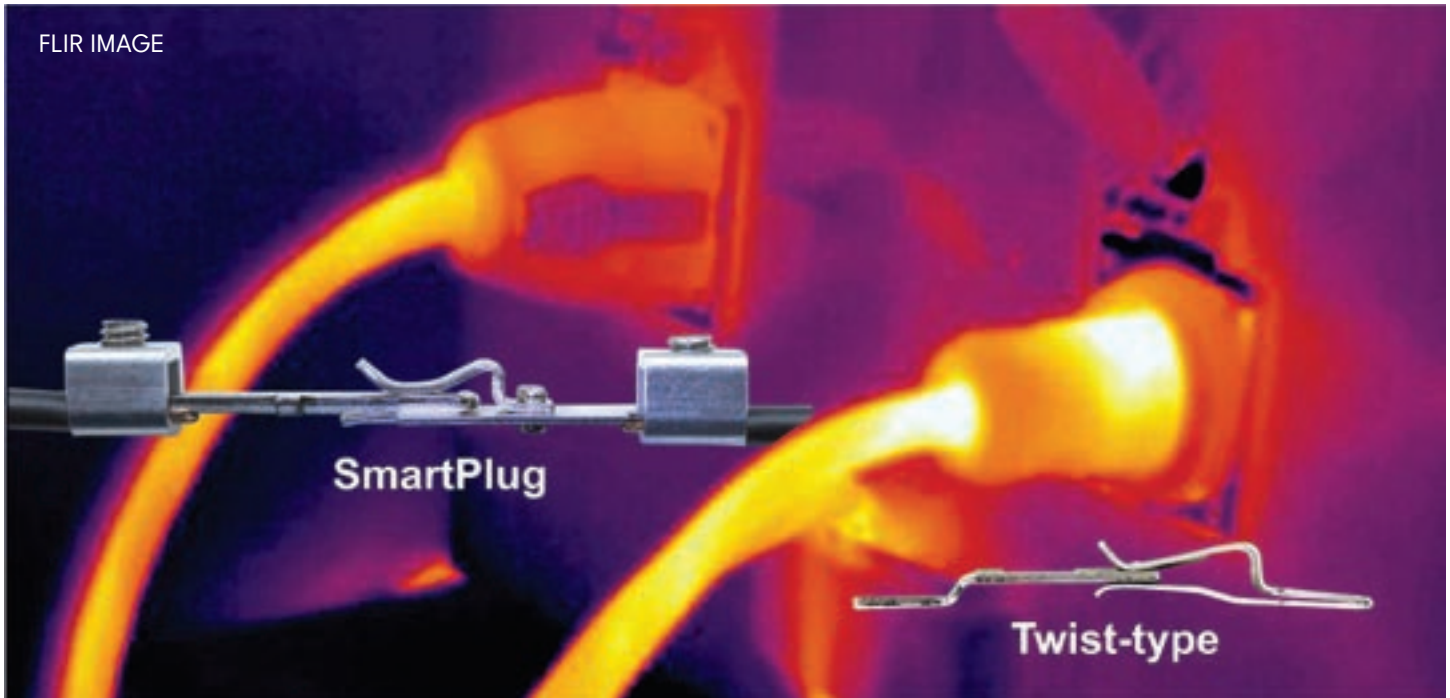


THE SOLUTION

SMARTPLUG HAS OVER 27 TIMES THE METAL TO METAL CONTACT AREA



SAFER - MORE METAL CONTACT REDUCES OVERHEATING



Cooler

Hotter

SmartPlug 30 Amp

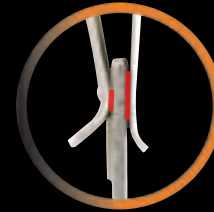


Over 27X The Contact Area

- Back of Pin = 16.4 mm x 8.5 mm = 139.4 sq mm
- Front of Pin = 6 mm x 8.5 mm = 51 sq mm

Total Contact Area = 190.4 sq mm

30 Amp Twist-type



30A Twist-type - Surface Contact Area

- Back of Pin = 1.3 mm x 2.7 mm = 3.51 sq mm
- Front of Pin = 1.3 mm x 2.4 mm = 3.12 sq mm

Total Contact Area With Dimple Locked In Place = 6.63 sq mm

4 EASY STEPS TO SAFETY

CUT OFF YOUR PLUG HEAD

STEP 1



STEP 2

STRIP AND PREPARE WIRE



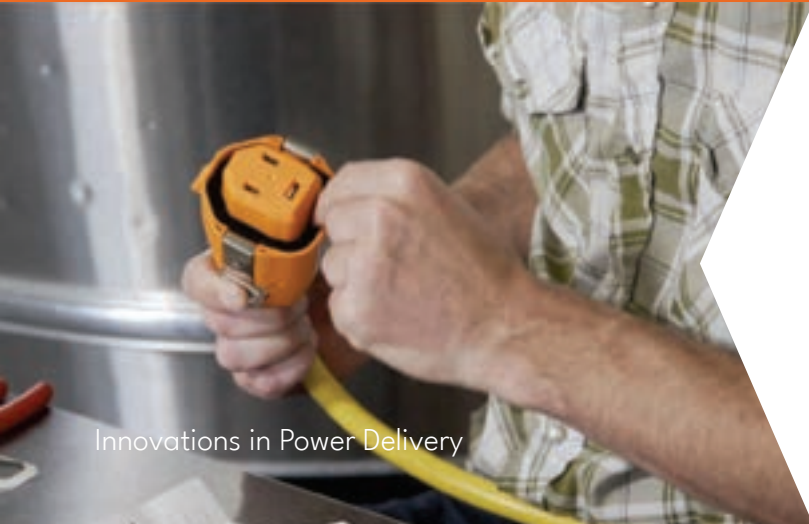
STEP 3

ATTACH WIRES TO PLUG HEAD



STEP 4

ASSEMBLE PLUG HEAD AND GASKET



NO TWISTING! SELF CLEANING PUSH-IN DESIGN



STAINLESS STEEL INLET
316 cast stainless steel
for maximum corrosion
resistance.



NON-METALLIC INLETS
Produced with UV
resistant materials.

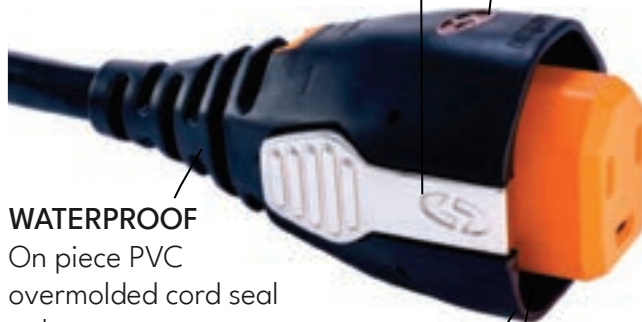
INLET & CONNECTOR FEATURES

LED TWO COLOR REVERSE POLARITY AND POWER LIGHTS

One red and one blue LED light for
Safe/Unsafe Electrical Power Indication
under Reverse Polarity Conditions.

LOCKING FEATURES

Dual 316 SS side locking levers
snap into sides of inlet housing.



WATERPROOF

On piece PVC
overmolded cord seal
to keep water out.
(only on factory cordsets)

CONNECTOR BODY SHAPE

Sleeve design fits snugly
within inlet, removing all
tension from pins & clips.
Easy one-handed insertion.

WEATHERPROOF

Superior gasket seals
against inlet sleeve to
eliminate dirt and
moisture exposure on
electrical pins.

WEATHERPROOF

Face gasket seals.
Now IP56 rated.

INLET CASE CONSTRUCTION

316 cast stainless steel for
maximum corrosion resistance.
Also offered in non-metallic high
strength UV resistant material.

ELECTRICAL PINS

Straight pins with 27X
more surface area.
No twisting required!

EASE OF USE

Unique plug body shape only goes in
the correct way. Easy to orient with no
misalignment - even in the dark! Pushes
straight in & locks automatically.



CORDSET FEATURES

The revolutionary SmartPlug cordsets replace old, outdated twist-type shore power cord. The unique SmartPlug cables minimize corrosion from the outdoor elements. Our Superflex cable combines flexibility and durability, and are easy to coil even in freezing weather.



Pull Handle

SUPERFLEX BEST IN THE INDUSTRY

- Corrosion Resistant
- Heavy Duty Cable
- Stows Easily & Remains Flexible
- Coils Tightly Even In Freezing Weather



REVERSE POLARITY

Reverse Polarity is a safety concern and can damage electrical components on the coach or trailer. This unsafe condition exists when the power coming from the pedestal is improperly wired. The issue has become enough of a concern that the New 2020 NFPA 70 National Electrical Code introduced language in the RV STD Article 551 to include a new section 551.40(D). This addition requires a reverse polarity device on all New Recreational Vehicles as of 7/1/2021.

New for 2021 is SmartPlug's Reverse Polarity Indicator System. On top of all SmartPlug coachside power cord connectors are two LED Indicator Lights, one blue and one red. When the SmartPlug is connected to a power source the lights will illuminate to indicate the status of a safe or unsafe condition. Our cordsets are weather-proof and easy to use, plus they ensure your family can safely enjoy their next adventure.



- ○ Blue ON Red OFF: Normal power condition. OK TO PROCEED.
- ● Blue ON Red ON: L1 and neutral are swapped in a reverse polarity condition. DISCONNECT CORDSET FROM POWER SOURCE AND IMMEDIATELY CONTACT MANAGEMENT.
- ● Blue OFF Red ON: L1 and Ground are swapped in a DANGEROUS GROUND CONDITION. DISCONNECT CORDSET FROM POWER SOURCE AND IMMEDIATELY CONTACT MANAGEMENT.
- ○ Blue OFF Red OFF: No power condition. CHECK CONNECTION AND POWER.



15 AMP

DESCRIPTION

This cord can be plugged into a standard household current and be the main cord for charging your vehicle.



15 AMP CORDSET WITH REVERSE POLARITY INDICATOR SYSTEM

15 Amp / 125VAC Cordset - 30 Amp SmartPlug Female Connector x
15 Amp STD Male Wall Plug

PART NUMBER	DESCRIPTION	LENGTH	COLOR	VEHICLE SIDE	PARK SIDE
C15043	15 Amp / 125V Cordset - 30 Amp SmartPlug Female Connector and 15 Amp Male Wall Plug	4ft	Orange	30 Amp SmartPlug	15 Amp Wall Plug
C15253	15 Amp / 125V Cordset - 30 Amp SmartPlug Female Connector and 15 Amp Male Wall Plug	25ft	Orange	30 Amp SmartPlug	15 Amp Wall Plug
C15503	15 Amp / 125V Cordset - 30 Amp SmartPlug Female Connector and 15 Amp Male Wall Plug	50ft	Orange	30 Amp SmartPlug	15 Amp Wall Plug



30 AMP CORDSETS & INLET COMBOS

DESCRIPTION

This cord allows you to connect to a standard 30A Push-type park pedestal and a vehicle side SmartPlug 30A inlet.



Pull Handle

30 AMP CORDSET WITH REVERSE POLARITY INDICATOR SYSTEM

30 Amp 125V SmartPlug Female Connector x 30 Amp RV Male 3 Pin Park Side Connector

PART NUMBER	DESCRIPTION	LENGTH	COLOR	VEHICLE SIDE	PARK SIDE
R30303	30 Amp / 125V / Female - RV Side and 30 Amp / 125V Male Park Side - 3 Pin Push-type Connector	30ft	Black	30 Amp SmartPlug	30 Amp Twist-type



30 AMP CORDSET WITH REVERSE POLARITY INDICATOR SYSTEM & INLET COMBOS

30 Amp 125V SmartPlug Female Connector x
30 Amp RV Male 3 Pin Park Side Connector &
30 Amp Male Inlet

PART NUMBER	DESCRIPTION	CORD SPECIFICATIONS				INLET TYPE
		LENGTH	COLOR	VEHICLE SIDE	PARK SIDE	COLOR
R30303BM30NT	30 Amp / 125V / Inlet Male - Vehicle Side & Male Push-type Park Side 30' Cord	30ft	Black	30 Amp SmartPlug	30 Amp Push-type	Stainless Steel
R30303BM30PW	30 Amp / 125V / Inlet Male - Vehicle Side & Male Push-type Park Side 30' Cord	30ft	Black	30 Amp SmartPlug	30 Amp Push-type	White
R30303BM30PG	30 Amp / 125V / Inlet Male - Vehicle Side & Male Push-type Park Side 30' Cord	30ft	Black	30 Amp SmartPlug	30 Amp Push-type	Gray
R30303BM30PB	30 Amp / 125V / Inlet Male - Vehicle Side & Male Push-type Park Side 30' Cord	30ft	Black	30 Amp SmartPlug	30 Amp Push-type	Black

50 AMP CORDSET

DESCRIPTION

This cord allows you to connect to a standard 50A Push-type park pedestal and a vehicle side SmartPlug 50A inlet.



Pull Handle

50 AMP CORDSET WITH REVERSE POLARITY INDICATOR SYSTEM

50 Amp 125/250V SmartPlug Female Connector x 50 Amp 125/250V RV Male 4 Pin Park Side Connector

PART NUMBER	DESCRIPTION	LENGTH	COLOR	VEHICLE SIDE	PARK SIDE
R50304	50 Amp / 125V / 250V 4-Wire Cable Female SmartPlug Connector / Male Push-type Connector Park Side	30ft	Black	50 Amp SmartPlug	50 Amp Push-type

30 AMP - US

30 AMP INLETS

PART NUMBER	DESCRIPTION	MATERIAL	COLOR
BM30NT	30 Amp / 125V Male Vehicle Inlet	Stainless Steel	Stainless
BM30PW	30 Amp / 125V Male Vehicle Inlet	Non-metallic	White
BM30PG	30 Amp / 125V Male Vehicle Inlet	Non-metallic	Gray
BM30PB	30 Amp / 125V Male Vehicle Inlet	Non-metallic	Black



30 AMP CONNECTOR

PART NUMBER	DESCRIPTION	MATERIAL	COLOR
BF30	30 Amp / 125V / SmartPlug Female Cord End Connector	Non-Metallic	Orange



30 AMP COMBO KITS

PART NUMBER	DESCRIPTION	INLET	
		MATERIAL	COLOR
B30ASSYNT	30 Amp / 125V Male Vehicle Inlet and Female Cord End Connector	Stainless Steel	Stainless
B30ASSYPW	30 Amp / 125V Male Vehicle Inlet and Female Cord End Connector	Non-Metallic	White
B30ASSYPG	30 Amp / 125V Male Vehicle Inlet and Female Cord End Connector	Non-Metallic	Gray
B30ASSYPB	30 Amp / 125V Male Vehicle Inlet and Female Cord End Connector	Non-Metallic	Black





50 AMP - US

50 AMP INLETS

PART NUMBER	DESCRIPTION	MATERIAL	COLOR
BM50S	50 Amp / 125V / 250V Male Vehicle Inlet	Stainless Steel	Stainless
BM50PW	50 Amp / 125V / 250V Male Vehicle Inlet	Non-metallic	White
BM50PG	50 Amp / 125V / 250V Male Vehicle Inlet	Non-metallic	Gray
BM50PB	50 Amp / 125V / 250V Male Vehicle Inlet	Non-metallic	Black



50 AMP CONNECTOR

PART NUMBER	DESCRIPTION	MATERIAL	COLOR
BF50	50 Amp / 125V / 250V / SmartPlug Female Cord End Connector	Non-Metallic	Orange



50 AMP COMBO KITS

PART NUMBER	DESCRIPTION	INLET	
		MATERIAL	COLOR
B50ASSY	50 Amp / 125V / 250V Male Vehicle Inlet and Female Cord End Connector	Stainless Steel	Stainless
B50ASSYPW	50 Amp / 125V / 250V Male Vehicle Inlet and Female Cord End Connector	Non-Metallic	White
B50ASSYPG	50 Amp / 125V / 250V Male Vehicle Inlet and Female Cord End Connector	Non-Metallic	Gray
B50ASSYPB	50 Amp / 125V / 250V Male Vehicle Inlet and Female Cord End Connector	Non-Metallic	Black

16 AMP - EURO



16 AMP INLETS

PART NUMBER	DESCRIPTION	MATERIAL	COLOR
BM16NT	16 Amp / 230V Male Vehicle Inlet	Stainless Steel	Stainless
BM16PW	16 Amp / 230V Male Vehicle Inlet	Non-Metallic	White
BM16PG	16 Amp / 230V Male Vehicle Inlet	Non-Metallic	Gray
BM16PB	16 Amp / 230V Male Vehicle Inlet	Non-Metallic	Black



New and improved cord seal. This new design is made for an easy installation for a water-tight connection. It provides superior anti-vibration support for a firm grip on the power cord.

*Available in Q3 2023



16 AMP CONNECTOR

PART NUMBER	DESCRIPTION	MATERIAL	COLOR
BF16	16 Amp / 230V SmartPlug Female Cord End Connector	Non-Metallic	Orange





16 AMP COMBO KITS

		INLET	
PART NUMBER	DESCRIPTION	MATERIAL	COLOR
B16ASSYNT	16 Amp / 230V Male Vehicle Inlet and Female Cord End Connector	Stainless Steel	Stainless
B16ASSYPW	16 Amp / 230V Male Vehicle Inlet and Female Cord End Connector	Non-Metallic	White
B16ASSYPG	16 Amp / 230V Male Vehicle Inlet and Female Cord End Connector	Non-Metallic	Gray
B16ASSYPB	16 Amp / 230V Male Vehicle Inlet and Female Cord End Connector	Non-Metallic	Black

DESCRIPTION

This cord allows you to connect to a European 16A SmartPlug inlet and attach your own connector to the park side end.



16 AMP HARMONIZED CORDS WITH REVERSE POLARITY INDICATOR SYSTEM

Single Configuration - 16 Amp / 230V Harmonized Cord -
16 Amp SmartPlug Female Connector w/ Open End

PART NUMBER	DESCRIPTION	LENGTH	COLOR	VEHICLE SIDE	PARK SIDE
C16123	16 Amp / 230V Cord - 16 Amp SmartPlug Female Connector X Open End	12.5M	Orange	16 Amp SmartPlug	Open End
C16253	16 Amp / 230V Cord - 16 Amp SmartPlug Female Connector X Open End	25M	Orange	16 Amp SmartPlug	Open End

32 AMP - EURO



32 AMP INLETS

PART NUMBER	DESCRIPTION	MATERIAL	COLOR
BM32S	32 Amp / 230V Male Vehicle Inlet	Stainless Steel	Stainless
BM32PW	32 Amp / 230V Male Vehicle Inlet	Non-Metallic	White
BM32PG	32 Amp / 230V Male Vehicle Inlet	Non-Metallic	Gray
BM32PB	32 Amp / 230V Male Vehicle Inlet	Non-Metallic	Black



New and improved cord seal. This new design is made for an easy installation for a water-tight connection. It provides superior anti-vibration support for a firm grip on the power cord.

*Available in Q3 2023



32 AMP CONNECTOR

PART NUMBER	DESCRIPTION	MATERIAL	COLOR
BF32	32 Amp / 230V SmartPlug Female Cord End Connector	Non-Metallic	Orange





32 AMP COMBO KITS

		INLET	
PART NUMBER	DESCRIPTION	MATERIAL	COLOR
B32ASSY	32 Amp / 230V Male Vehicle Inlet and Female Cord End Connector	Stainless Steel	Stainless
B32ASSVPW	32 Amp / 230V Male Vehicle Inlet and Female Cord End Connector	Non-Metallic	White
B32ASSYPG	32 Amp / 230V Male Vehicle Inlet and Female Cord End Connector	Non-Metallic	Gray
B32ASSYPB	32 Amp / 230V Male Vehicle Inlet and Female Cord End Connector	Non-Metallic	Black

DESCRIPTION

This cord allows you to connect to a European 32A SmartPlug inlet and attach your own connector to the park side end.



32 AMP HARMONIZED CORDS WITH REVERSE POLARITY INDICATOR SYSTEM

Single Configuration - 32 Amp / 230V Harmonized Cord -
32 Amp SmartPlug Female Connector X Open End

PART NUMBER	DESCRIPTION	LENGTH	COLOR	VEHICLE SIDE	PARK SIDE
C32153	32 Amp / 230V Cord - 32 Amp SmartPlug Female Connector X Open End	15M	Orange	32 Amp SmartPlug	Open End
C32253	32 Amp / 230V Cord - 32 Amp SmartPlug Female Connector X Open End	25M	Orange	32 Amp SmartPlug	Open End

DATA PORTS

PHONE / TV / CABLE / INTERNET



The SmartPlug Data Port products are the perfect complement to our shore power inlets. They are available in coax cable, ethernet, HDMI, USB-C, USB-A and mixed combinations.

All single Data Port inlets are supplied with one connector and one blank insert.

SINGLE DATA PORT DESIGN

PART NUMBER	DESCRIPTION	MATERIAL	COLOR
BDCOAX	Single - TV / Internet Connector - Stainless Steel	Stainless Steel	Stainless
BDCOAXPB	Single - TV / Internet Connector	Non-Metallic	Black
BDCOAXPG	Single - TV / Internet Connector	Non-Metallic	Gray
BDCOAXPW	Single - TV / Internet Connector	Non-Metallic	White
BDUSBC	Single - USB-C Connector - Stainless Steel	Stainless Steel	Stainless
BDUSBCPB	Single - USB-C Connector	Non-Metallic	Black
BDUSBCPG	Single - USB-C Connector	Non-Metallic	Gray
BDUSBCPW	Single - USB-C Connector	Non-Metallic	White
BDUSBA	Single - USB-A Connector - Stainless Steel	Stainless Steel	Stainless
BDUSBAPB	Single - USB-A Connector	Non-Metallic	Black
BDUSBAPG	Single - USB-A Connector	Non-Metallic	Gray
BDUSBAPW	Single - USB-A Connector	Non-Metallic	White
BDHDMI	Single - HDMI Connector - Stainless Steel	Stainless Steel	Stainless
BDHDMIPB	Single - HDMI Connector	Non-Metallic	Black
BDHDMIPG	Single - HDMI Connector	Non-Metallic	Gray
BDHDMIPW	Single - HDMI Connector	Non-Metallic	White
BDETH	Single - Ethernet Cable Connector - Stainless Steel	Stainless Steel	Stainless
BDETHPB	Single - Ethernet Cable Connector	Non-Metallic	Black
BDETHPG	Single - Ethernet Cable Connector	Non-Metallic	Gray
BDETHPW	Single - Ethernet Cable Connector	Non-Metallic	White
BDBSS	Single - Blank & Open Port- Stainless Steel	Stainless Steel	Stainless
BDBPB	Single - Blank & Open Port	Non-Metallic	Black
BDBPG	Single - Blank & Open Port	Non-Metallic	Gray
BDBPW	Single - Blank & Open Port	Non-Metallic	White



NEW CONNECTOR PORTS

Build or expand your own Data Port inlet.

PART NUMBER	DESCRIPTION	MATERIAL	COLOR
KSJCOAX	Single - TV / Internet Connector Port	Non-Metallic	Black
KSJUSBC	Single - USB-C Connector Port	Non-Metallic	Black
KSJUSB	Single - USB-A Connector Port	Non-Metallic	Black
KSJHDMI	Single - HDMI Connector Port	Non-Metallic	Black
KSJETH	Single - Ethernet Cable Connector Port	Non-Metallic	Black



DATA PORTS

PHONE / TV / CABLE / INTERNET

NEW DOUBLE DATA PORT DESIGN



Cable / Cable Cable / HDMI Cable / USB-C Cable / USB-A Cable / Ethernet Ethernet / HDMI Ethernet / USB-C Ethernet / USB-A HDMI / USB-C HDMI / USB-A USB-A / USB-A USB-C / USB-C USB-C / USB-A

SS Stainless Steel	BDCOAXCC	BDSSCH	BDSSCU	BDSSCUA	BDCOAXEC	BDSSEH	BDSSEU	BDSSEUA	BDSSHU	BDSSHUA	BDSSUAUA	BDSSUU	BDSSUUA
PB Black	BDPBCC	BDPBCH	BDPBCU	BDPBCUA	BDPBEC	BDPBEH	BDPBEU	BDPBEUA	BDPBHU	BDPBHUA	BDPBUAUA	BDPBUI	BDPBUIA
PG Gray	BDCOAXCCPG	BDPGCH	BDPGCU	BDPGCUA	BDPGEC	BDPGEH	BDPGEU	BDPGEUA	BDPGHU	BDPGHUA	BDPGUAUA	BDPGUU	BDPGUIA
PW White	BDPWCC	BDPWCH	BDPWCU	BDPWCUA	BDPWEC	BDPWEH	BDPWEU	BDPWEUA	BDPWHU	BDPWHUA	BDPWUAUA	BDPWUU	BDPWUIA

ACCESSORIES



16, 30, 32 & 50 AMP - WEATHER CAP

The SmartPlug Weather Cap protects the SmartPlug shore power connectors from moisture when not in use. These weather resistant caps come with a convenient lanyard for tethering the cover to the cordset.

PART NUMBER

A1001

16, 30, 32 & 50 AMP CARRY BAG

The SmartPlug cordset bag provides a convenient way to transport and store your cordset. The cordset bag includes handles and a zipper for easy use.



PART NUMBER	FITS CORDS SETS
CB1001	16 Amp - 12.5 m, 25 m & 32 Amp - 25 m 30 Amp - 25 ft, 50 ft & 50 Amp - 25 ft

SERVICE KITS

SmartPlug service kits provide all of the electrical components, hardware, and gaskets required to replace or repair the SmartPlug products.

FEMALE CONNECTOR / ELECTRICAL

SERVICE KITS / FOR BF30, F50, BF16 & BF32 PRODUCTS



PART NUMBER	DESCRIPTION
PKF30	Service Kit - 30 Amp / 125V - SmartPlug BF30 Female Connector
PKF50	Service Kit - 50 Amp / 125V / 250V - SmartPlug BF50 Female Connector
PKF16	Service Kit - 16 Amp / 230V - SmartPlug BF16 Female Connector
PKF32	Service Kit - 32 Amp / 230V - SmartPlug BF32 Female Connector

SIDE LEVER KIT

SIDE LEVER KIT / REPLACEMENTS FOR ALL SMARTPLUG FEMALE CONNECTORS

PART NUMBER	DESCRIPTION
PKF01	Side Lever Kit - Stainless Steel Levers, Pins And Springs To Fit All SmartPlug Connectors



MALE INLET CONNECTOR / ELECTRICAL

SERVICE KITS / FOR BM30, BM50, BM16, BM32, PRODUCTS



PART NUMBER	DESCRIPTION
PKM30	Service Kit - 30 Amp / 125V - SmartPlug BM30 Male Inlet
PKM50	Service Kit - 50 Amp / 125V / 250V - SmartPlug BM50 Male Inlet
PKM16	Service Kit - 16 Amp / 230V - SmartPlug BM16 Male Inlet
PKM32	Service Kit - 32 Amp / 230V - SmartPlug BM32 Male Inlet

FEMALE CONNECTOR / GASKETS

GASKET KITS / REPLACES GASKETS FOR BF30, BF50, BF16 & BF32 PRODUCTS

PART NUMBER	DESCRIPTION
PKF30G	Gasket Kit - 30 Amp / 125V - SmartPlug BF30 Female Connector
PKF50G	Gasket Kit - 50 Amp / 125V / 250V - SmartPlug BF50 Female Connector
PKF16G	Gasket Kit - 16 Amp / 230V - SmartPlug BF16 Female Connector
PKF32G	Gasket Kit - 32 Amp / 230V - SmartPlug BF32 Female Connector



MALE INLET / GASKETS

GASKET KIT / REPLACES GASKETS FOR BM30, BM50, BM16 & BM32 PRODUCTS

PART NUMBER	DESCRIPTION
PKMGKT	Gasket Kit - Fits All SmartPlug Male Including Stainless & Non-metallic Inlets

NEW NOW ETL APPROVED!

ONLY ETL APPROVED ADAPTERS IN THE INDUSTRY

MATES TO
VEHICLE INLET

MATES TO
RECEPTACLE

MATES TO
VEHICLE INLET

MATES TO
RECEPTACLE

 30 Amp Male SmartPlug	 C15043	 15 Amp STD Wall Plug	 30 Amp Male Twist-type	 CM30043L530R	 30 Amp Female SmartPlug
 50 Amp Male SmartPlug	 Available in Q3 2023 CM50043	 30 Amp Female SmartPlug	 30 Amp Male SmartPlug	 C30043	 30 Amp Female Twist-type
 50 Amp Male SmartPlug	 C50044L515P	 15 Amp STD Wall Plug	 50 Amp Male SmartPlug	 C50044	 50 Amp Female Twist-type
 50 Amp Male SmartPlug	 C50044L530P	 30 Amp Female Twist-type	 50 Amp Male Twist-type	 CM5004460729R	 50 Amp Female SmartPlug

PART NUMBER	DESCRIPTION	LENGTH	COLOR	VEHICLE SIDE	PARK SIDE
C15043	30 Amp SmartPlug Female Connector to 15 Amp STD Male Wall Plug Connector	4ft	Orange	30 Amp Female SmartPlug Connector	15 Amp Male Wall Plug Connector
CM30043L530R	30 Amp Female Twist-type Connector to 30 Amp SmartPlug Male Connector	4ft	Orange	30 Amp Twist-type Female Connector	30 Amp Male SmartPlug Connector
C30043	30 Amp SmartPlug Female Connector to 30 Amp Twist-type Male Connector	4ft	Orange	30 Amp Female SmartPlug Connector	30 Amp Twist-type Male SmartPlug Connector
CM50043	50 Amp SmartPlug Female Connector to 30 Amp SmartPlug Male Connector	4ft	Orange	50 Amp Female SmartPlug Connector	30 Amp Male SmartPlug Connector
C50044L515P	50 Amp SmartPlug Female Connector to 15 Amp STD Male Wall Plug Connector	4ft	Orange	50 Amp Female SmartPlug Connector	15 Amp Male Wall Plug Connector
C50044L530P	50 Amp SmartPlug Female Connector to 30 Amp Male Twist-type Connector	4ft	Orange	50 Amp Female SmartPlug Connector	30 Amp Male Twist-type Connector
C50044	50 Amp SmartPlug Female Connector to 50 Amp Male Twist-type Connector	4ft	Orange	50 Amp Female SmartPlug Connector	50 Amp Male Twist-type Connector
CM5004460729R	50 Amp Female Twist-type Connector to 50 Amp SmartPlug Male Connector	4ft	Black	50 Amp Twist-type Connector	50 Amp Male SmartPlug Connector



DURABLE AND WEATHER RESISTANT

SMARTPLUG PRODUCTS ARE MADE TO LAST IN THE MOST EXTREME ENVIRONMENTS

SmartPlug Systems uses only the finest materials available in construction of its products. All external metals are Marine-Grade 316 Stainless Steel, the electrical pins are nickel-plated brass for maximum conductivity. All plastics are UV and heat resistant.

Water intrusion leads to corrosion. Corrosion leads to electrical arcing and overheating. SmartPlug's weatherproof seals eliminate the possibility of water and moisture intrusion, ensuring a safe and dry connection. Now IP56 rated for even more waterproof conditions.



SmartPlug offers a robust range of rugged products that are durable and water resistant. We use a large heavy-duty cord on all our products. Our inlets and connectors can take on the most extreme weather conditions to keep you going no matter where your adventures take you.

TESTIMONIALS

THEY SAID IT

"Just want to say what a delight it is to use SmartPlug. From the moment i picked it up, I appreciated it's heft and knew I was working with a quality product. I particularly appreciated the bright light feature as the first of my 24 Airstream hookups at AutoCamp Russian River was at night and the light came as a pleasant surprise. I also want to acknowledge its fool-proof design as there was no question as to how to plug it in. Thanks for providing a great product."

Mark Belhumeur
General Manager
AutoCamp Russian River

"Using SmartPlug provides me with the feeling of a rock solid connection, no fear of overheating and melting contacts, and the ease of plugging in. Disconnecting is easy, disconnect power, lift the cover, push in on the two tabs and pull the plug. From my personal use and experience of this product I can recommend any RV owner to switch to the SmartPlug, as so many boat owners have done. I wish the RV industry would change the existing twist plugs to a safe and sound system like this. The few more dollars are dollars well spent."

Hans
Extremely Satisfied Customer

"I have had the SmartPlug installed on my Airstream trailer for a year and a half and it has been as advertised. It is a heavier duty and better looking alternative to the standard shore power cord and connection. The cord is easy to handle and has an optional cover for the end of cord to prevent corrosion and dirt from getting into the connections.

It slides straight into the connection receptacle on the trailer and firmly locks into place without any twisting or turning a plastic collar. The end of the cord has a blue LED light to let you know when you are hooked to power.

I would recommend SmartPlug to anyone wanting to upgrade their power cord and connections."

Dave Schumann
General Manger of Airstream Customer Relations,
Retired



SAFE

SIMPLE

SECURE



RV PRODUCT
CATALOG
2023

2500 Westlake Avenue North, Suite G
Seattle, WA 98109-2262



Proudly made
in the USA

info@smartplug.com

www.SmartPlug.com

206.285.2990

031523A